



Owner's Manual Model C-4

Kent Investment Corporation

Shipping Address: 250 Hwy 62-Wast Ash Flat, AR 72513

Mailing Address: PO Box 279 Ash Flat, AR 72513

Phone: (870) 994-3535 Fax: (870) 994-3535

Table Of Contents	Page
Introduction	1
When the Machine is Delivered	1
Before Operation the Machine	1
Important Safety Instructions	1
General Instructions	1
Warnings	1-2
Grounding Instructions	2
Cleaning Instructions	3
Preparing Machine	3
Cleaning Carpet	3
Cleaning Upholstery	4
Cleaning Stairs	4
Cleaning Machine	4
Machine Troubleshooting	5
Loss of Electrical Power	5
Loss of Vacuum /Little Suction	5
Lack of Water Pressure	5
No Brush Movement	5
Warranty	5

INTRODUCTION

BEFORE YOU USE YOUR OWNER'S MANUAL, PLEASE READ THIS INTRODUCTION ALL THE WAY THROUGH.

WHEN THE MACHINE IS DELIVERED:

Check the carton carefully for signs of damage and rough handling. Remove the machine from the carton. If the machine is damaged, notify the carrier immediately and request an inspection. Be sure to keep the carton, packing list and carrier's receipt until the inspector has verified your claim.

Kent Investment's liability ceases when the shipment is picked up by the carrier, but our customer service staff will be glad to furnish any information needed in connection with the claim and will expedite repair of the machine.

BEFORE OPERATING THE MACHINE

Read the manual carefully before operating Model C-4. The manual has important information for the use and safe operation of the machine. Keep this manual handy at all times. Model C-4 will assure years of satisfactory service if operated and maintained according to recommendations in this manual. If additional technical information is needed, please contact Kent Investment Corporation at 870-994-3535 or toll free at 800-669-6261.

All information and specifications printed in this manual and parts list are current at the time of printing; however, because of Kent Investment's policy of continual product improvement, we reserve the right to make changes at any time without notice.

WARRANTY: See page 5 of this manual for limited warranty.

Appliance is intended for household use only.

IMPORTANT SAFETY INSTRUCTIONS

When using an electrical appliance, basic precautions should always be followed, including the following:

READ ALL INSTRUCTIONS BEFORE USING MODEL C-4.

GENERAL INSTRUCTIONS

This floor finishing machine shall be grounded while in use to protect the operator from electric shock. The machine is provided with a three-conductor cord and a three-contact grounding type attachment plug to fit the proper grounding type receptacle. The green (or green and yellow) conductor in the cord is the grounding wire. NEVER connect this wire to anything other than the grounding pin of the attachment plug.

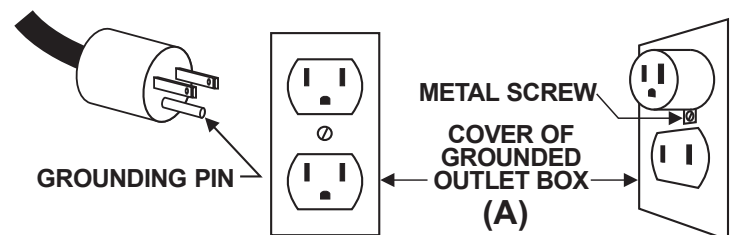
WARNING - TO REDUCE THE RISK OF FIRE, ELECTRICAL SHOCK, PERSONAL INJURY, OR DAMAGE TO MODEL C-4:

1. DO NOT leave appliance when plugged in. Unplug from outlet when not in use and before servicing.
2. To reduce the risk of electrical shock - DO NOT expose to rain. Store indoors.
3. This machine is intended for carpet and upholstery cleaning only!
4. Fill tank with machine bucket only! Machine must be emptied after 3 1/2 gallons of water and solution have been used.
5. DO NOT allow to be used as a toy. Close attention is necessary when used by or near children.

6. Use only as described in this manual. Use only Kent Investment Corp. recommended attachments and chemicals.
7. DO NOT use with damaged cord or plug. If appliance is not working as it should, has been dropped, damaged, left outdoors, or immersed in water, contact Kent Investment Corporation service department for service instructions.
8. DO NOT pull or carry by cord, use cord as a handle, close door on a cord, or pull cord around sharp edges or corners. DO NOT run equipment over cord. Keep cord away from heated surfaces.
9. DO NOT unplug by pulling on cord. To unplug, grasp the plug, not the cord.
10. DO NOT handle plug or equipment with wet hands.
11. DO NOT put any object into openings. DO NOT use with any openings blocked; keep free of dust, lint, hair, and anything that may reduce airflow.
12. Keep hair, loose clothing, fingers and all parts of body away from openings and moving parts.
13. DO NOT vacuum anything that is burning or smoking, such as cigarettes, matches, or hot ashes.
14. DO NOT use without filter screens in place.
15. Turn off all controls before unplugging.
16. Use extra care when cleaning stairs.
17. NEVER vacuum solvents, gasoline or other hazardous liquid or solid material or use in areas where they may be present.
18. Connect to a properly grounded outlet only. See grounding instructions.

GROUNDING INSTRUCTIONS

This machine is for use on a nominal 120-volt circuit and has a grounding plug that resembles the plug illustrated in diagram (A) (RIGHT). Make sure that the machine is connected to an outlet having the same configuration as the plug. No adapter should be used with this machine.



This appliance must be grounded. If it should malfunction or breakdown, grounding provides a path of least resistance for electric current to reduce the risk of electric shock. This appliance is equipped with a cord having an equipment-grounding conductor and grounding plug. The plug must be inserted into an appropriate outlet that is properly installed and grounded in accordance with all local codes and ordinances.

WARNING – Improper connection of the equipment-grounding conductor can result in a risk of electric shock. Check with a qualified electrician or service person if you are in doubt as to whether the outlet is properly grounded. Do not modify the plug provided with the appliance – if it will not fit the outlet, have a proper outlet installed by a qualified electrician.

This appliance is for use on a circuit having a nominal rating more than 120 v (or This appliance is rated more than 15 A and is for use on a circuit having a nominal rating of 120 V) and is factory-equipped with a specific electric cord and plug to permit connection to a proper electric circuit. Make sure that the appliance is connected to an outlet having the same configuration as the plug. No adapter should be used with this appliance. If the appliance must be reconnected for use on a different type of electric circuit, the reconnection should be made by a qualified service personnel.

SAVE THESE INSTRUCTIONS.

FOR CUSTOMERS IN CANADA:

CAUTION! To prevent electrical shock, do not use this polarized AC plug with an extension cord, receptacle or other outlet unless the blades can be fully inserted to prevent blade exposure.

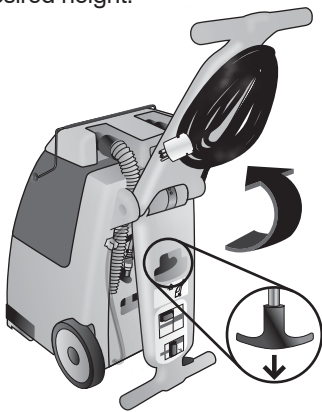
CLEANING INSTRUCTIONS

Preparing Carpet & Upholstery

- 1) Vacuum carpet or upholstery with your vacuum cleaner. This machine is not a vacuum cleaner.
NOTE: We recommend vacuuming carpet thoroughly, making four passes with a CRI approved vacuum cleaner.
- 2) Pre-treat general spots with **7 IN 1 Carpet Care**. Pre-treat pet & acid based spots with **7 IN 1 Spot & Odor Pet Formula**. Pre-treat heavily soiled areas of carpet, hallways, doorways and around furniture with **7 IN 1 Hi-Traffic Pre-Treatment**.
Note: Read and follow all **7 IN 1** label directions prior to use. Also see Test Colorfastness.

Preparing Machine

- 1) Pull "T" Handle on machine Handle.
- 2) Raise machine Handle to desired height.



- 1) Pull down Bucket Handle.
- 2) Lift the Lid.
- 3) Remove the Bucket.

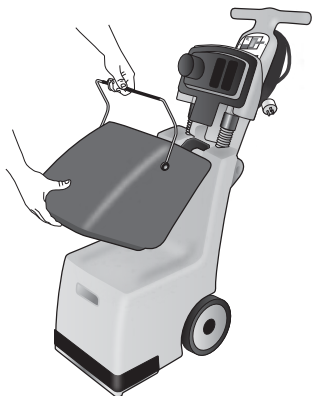


- 1) Read and follow all **7 IN 1 Carpet Care** directions. Mix **7 IN 1** with water in Bucket according to **Quick Dry** directions.

Note: Do not fill Bucket above top fill line.
Warning: Do not use bleach or dye in this machine. User will be liable for all damages.



- 1) **Important:** Pour contents of Bucket into machine Solution Tank.

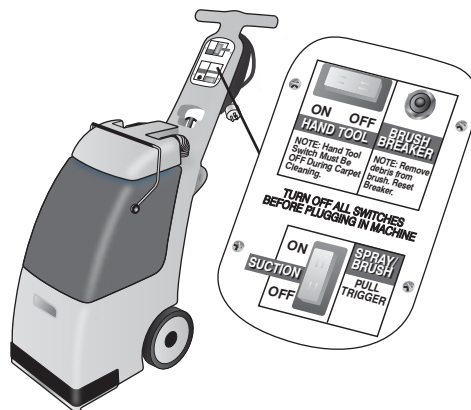


- 1) Return Bucket to Machine.
- 2) Close Lid.
- 3) Snap Bucket Handle into place.

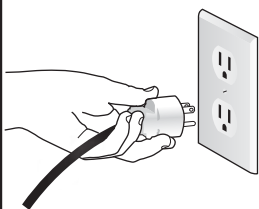


- 1) Turn all switches OFF.

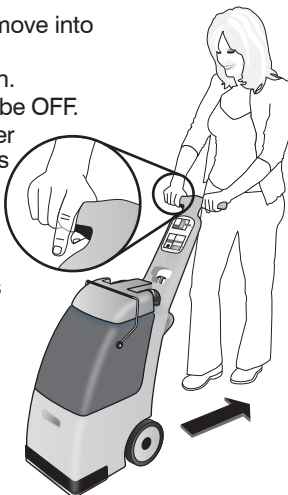
Cleaning Carpet



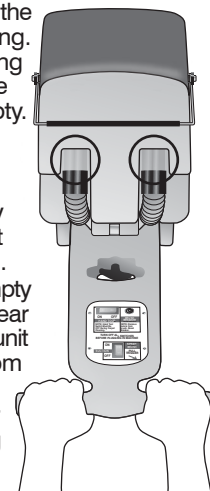
- 1) Plug in machine to a grounded outlet. **See Grounding Instructions.**



- 1) Tilt the machine back and move into the starting position.
- 2) Turn ON the Suction Switch.
Note: Hand Tool Switch must be OFF.
- 3) Pull the Spray/Brush Trigger and pull the machine backwards at a slow steady pace, about 1 foot per 2 seconds. Clean in approximately 5 foot strokes. Overlap strokes by 2 inches, releasing the Trigger 6 inches before ending each stroke. Keep the Suction Nozzle in firm contact with the carpet.
Note: For best results, clean heavily soiled areas twice at right angles.



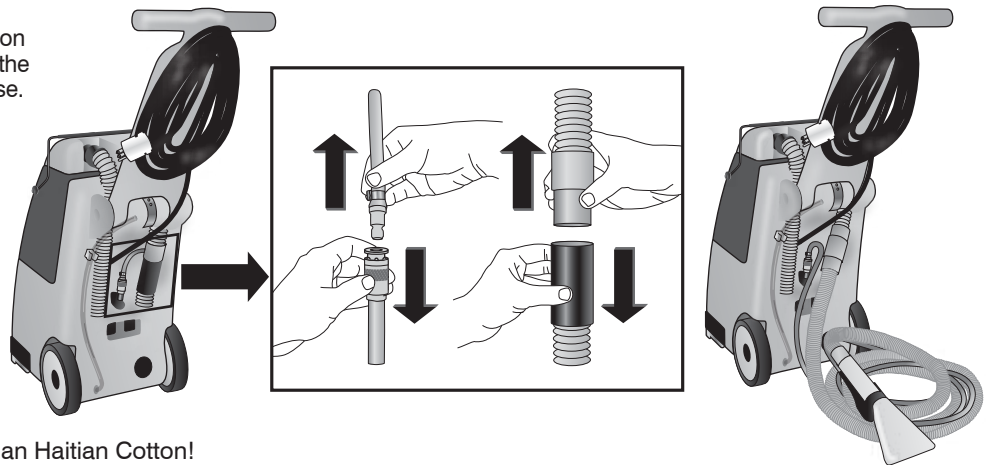
- 1) Dirty water passes through the right Sight Tube while cleaning. When dirty water stops passing through the Sight Tube while cleaning, the machine is empty. Empty dirty water and rinse Bucket. Refill the machine.
- 2) If foam or liquid appears in the left Sight Tube, empty the dirty water from the Bucket without refilling the machine.
- 3) When finished cleaning, empty and rinse Bucket. Use the clear Drain Tube at the back of the unit to empty unused solution from the Solution Tank.
Note: Use the Hand Tool for cleaning stairs. See Cleaning Upholstery for Hand Tool use.



CLEANING INSTRUCTIONS CONT.

Cleaning Upholstery

- 1) Turn all Switches OFF.
- 2) Disconnect the machine Solution Hose. Pull down on the middle of the brass Coupler. The hose will release. While holding down the Coupler, insert the Hand Tool Kit Solution Hose. Release Coupler. Pull on the Solution hose to insure it is secured.
- 3) Disconnect the grey and black Vacuum Cuffs at the back of the machine. Connect the grey Hand Tool Kit Cuff to the grey machine Cuff.

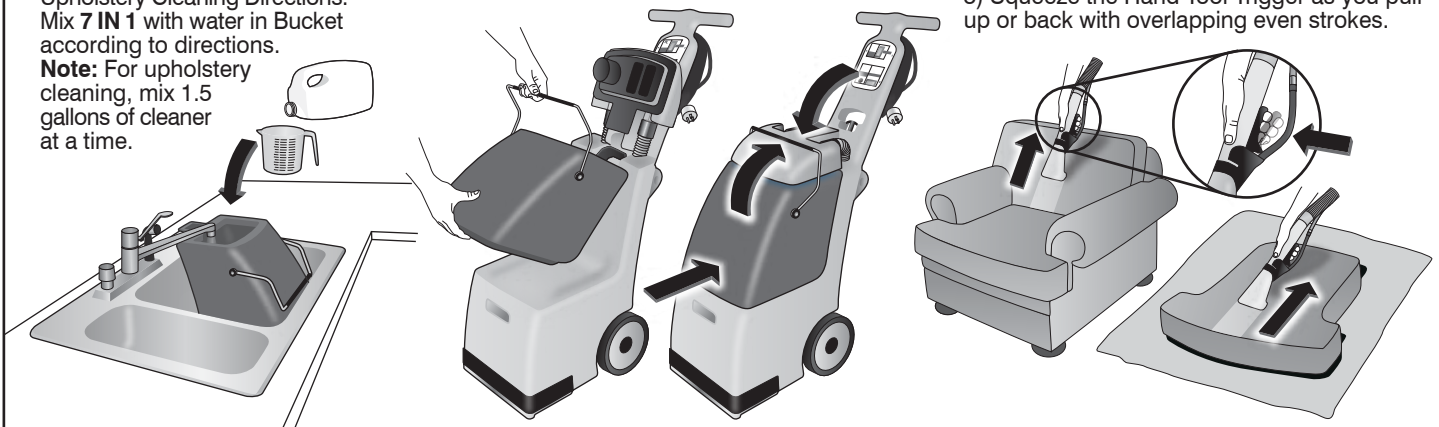


WARNING: Do Not Use To Clean Haitian Cotton!

- 1) Read **7 IN 1 Carpet Care** directions.
- See:** Test Colorfastness and Upholstery Cleaning Directions. Mix **7 IN 1** with water in Bucket according to directions.
- Note:** For upholstery cleaning, mix 1.5 gallons of cleaner at a time.

- 1) **Important:** Pour contents of Bucket into machine Solution Tank.

- 1) See Preparing Carpet & Upholstery.
- 2) Turn ON the Suction and Hand Tool Switches.
- 3) Squeeze the Hand Tool Trigger as you pull up or back with overlapping even strokes.

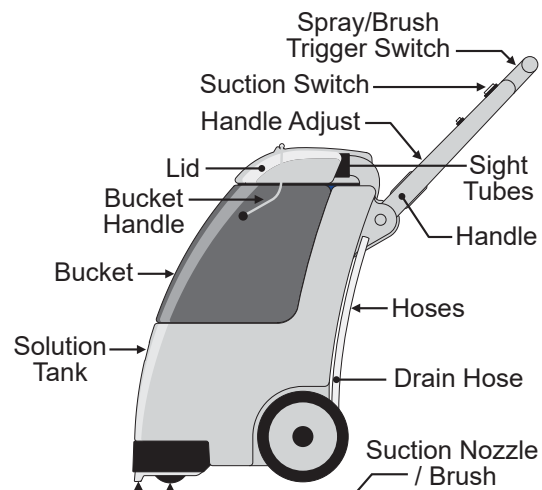


Cleaning Stairs

1. Use the Hand Tool to clean stairs. (See Cleaning Upholstery to hook up hand tool.)
 2. Clean the upstairs rooms first, then the stairs.
- IMPORTANT:** When cleaning the upper stairs, turn machine sideways so wheels are NOT facing forward, toward stairs. Be careful bringing the machine down wet stairs. Make sure to empty the Bucket, and Solution Tank using the Drain Hose.
3. Turn on Suction and Hand Tool Switches.
 4. Place Hand Tool Suction Nozzle on carpet and squeeze Trigger while pulling backwards.

Cleaning Machine

- 1) Wipe hair and debris from the Lid.
- 2) Drain unused solution from Solution Tank.
- 3) Dispose of solution and rinse Bucket thoroughly.
- 4) Clean out the Vac Nozzle using a bent wire hanger.
- 5) Remove fibers and hair from the Brush.
- 6) Wipe Brush Chamber clean with towel.
- 7) Wipe off the exterior of the machine with a damp towel.



MACHINE OPERATION TROUBLESHOOTING

LOSS OF ELECTRICAL POWER

- 1) Check if the Switches are in the ON position.
- 2) Check to see if Electric Cord is plugged in.
- 3) Check if the Brush Circuit Breaker has tripped. Clear brush of debris until brush turns freely. Then reset the breaker.
- 4) Check circuit breakers or fuse box in your building.
- 5) Check if the outlet is wired to a light switch, or try using a different outlet.
- 6) If Machine keeps blowing breakers or fuses every time you turn it on, have a qualified repair center check the equipment.

LOSS OF VACUUM / LITTLE OR NO SUCTION

- 1) Check if hose cuffs on back of the machine are connected. (See illustration on page 4.)
- 2) Be sure the suction switch is on. If you don't hear any sound from the vacuum, have a qualified repair center check the equipment.
- 3) Be sure the lid is firmly seated in the bucket and the bucket handle is snapped in place.
- 4) As you make a backwards cleaning stroke, be sure the suction lips are down firmly on the carpet.
- 5) Brush off any accumulated lint or debris on the vacuum filter screen located on the bottom of the lid.
- 6) The vacuum nozzle may be stopped up with lint. Turn the machine OFF. Unplug and empty the machine of liquid. Tilt the machine back and remove lint with a bent hanger.

LACK OF WATER PRESSURE

- 1) Make sure the cleaning solution was poured from the removable bucket into the solution tank.
- 2) Make sure to pull the spray/brush trigger switch while carpet cleaning; or the hand tool switch is ON when using the hand tool.
- 3) Check to see if the solution hose is connected at the back of the machine.
- 4) Make sure you are not out of cleaning solution.

NO BRUSH MOVEMENT

- 1) Pull the spray/brush trigger switch. If there is no movement, release trigger and check to see if the brush spins freely. Remove any lint and string caught on the brush. Reset the circuit breaker located on the Handle. **DO NOT** attempt to reset circuit breaker if it trips a second time. Have a qualified repair center check/repair the equipment.
- 2) If the motor runs and the brush will not spin (but it can be turned freely by hand), the belt needs to be replaced. See C-4 repair instructions for further details.

KENT INVESTMENT CORPORATION LIMITED WARRANTY

Kent Investment Corporation (the "Company") warrants each new machine against defects in material and workmanship under normal use and service for a period of six months from date of purchase. Our obligation under this warranty is limited to the making good at our factory or authorized distributor service station any part or parts thereof, except motors and pumps (see exception below), which within the warranty period are returned to our factory or authorized distributor service station, transportation prepaid, and which are determined by us to have been defective in workmanship or material. All parts being returned must be accompanied by date of purchase, name of party purchased from, invoice number and serial number of machine. Purchaser's exclusive remedy against defects in workmanship or material under this warranty shall be the repair or replacement of the returned part or parts as set forth above.

EXCEPTION: This warranty does not apply to motors or pumps used on Kent Investment machines. The motors and pumps carry a warranty of their own and are covered by the manufacturer of said motors and pumps.

This limited warranty does not cover any product or part(s), damage or defects resulting from misuse, neglect, accident, normal expected wear, unapproved chemicals, improper installation or operation contrary to factory recommendations or unapproved, unauthorized repairs or alterations. Kent Investment Corporation reserves the right to inspect and make the final decisions on any warranty claims that may be questionable.

Purchaser shall have no claim against the company in connection with this warranty, the company's machines, or otherwise, for consequential or incidental damages, including without limitation damages for loss of use, lost profits, or delayed delivery or expenses related to the receipt, transportation, or care of a new machine. In no event shall the company's liability with respect to each machine covered under this warranty exceed the price paid by purchaser for such machine.

This limited warranty is the exclusive warranty of Kent Investment Corporation and is in lieu of any other warranty express or implied, including, but not limited to, warranties of merchantability and fitness for a particular purpose.